



**India Meteorological Department
(Ministry of Earth Sciences)**

HOURLY UPDATE ON SEVERE CYCLONIC STORM “REMAL”

BULLETIN NO. 12

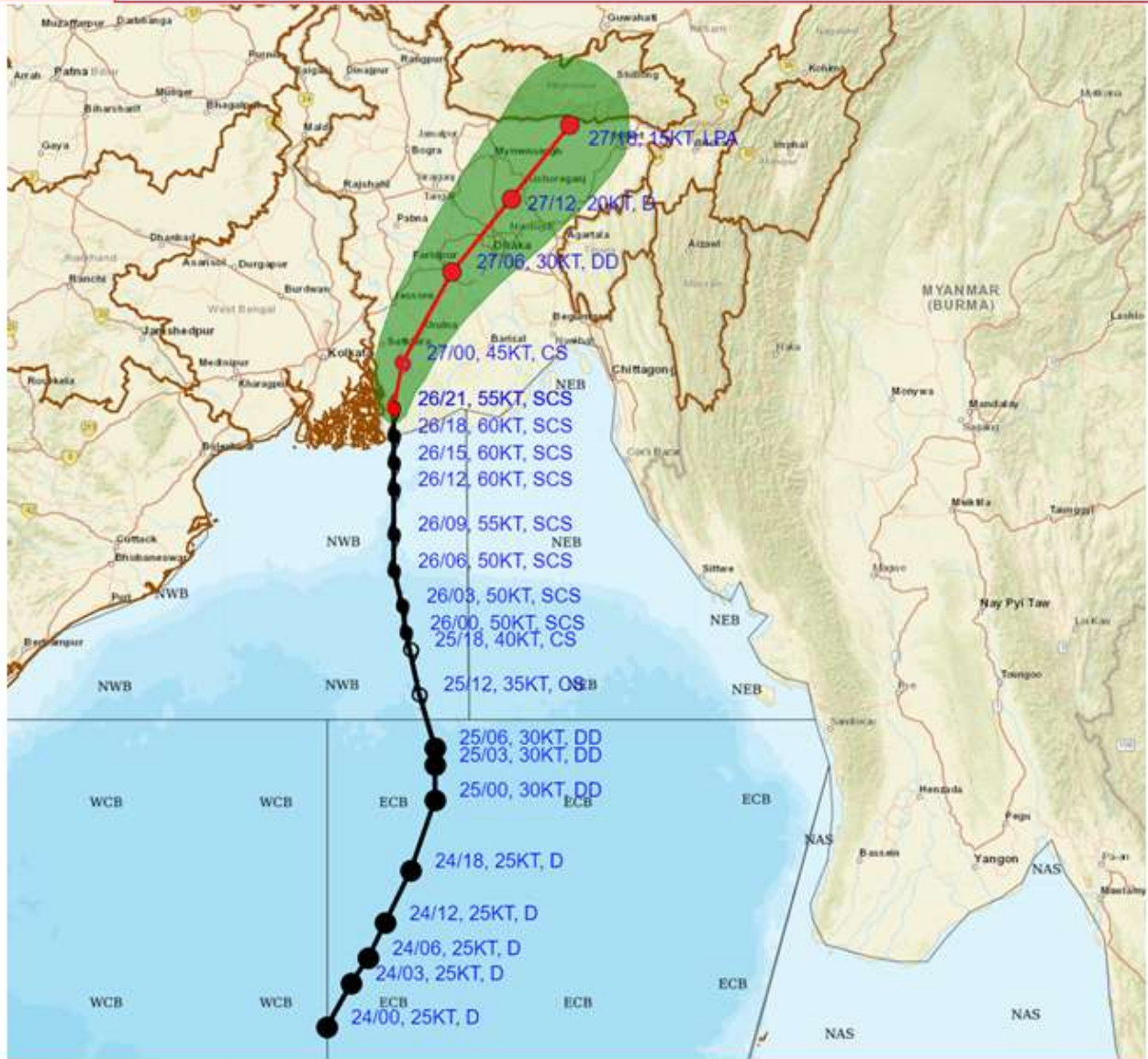
DATE: 27-05-2024

TIME OF ISSUE: 0530 HRS IST

DATE/TIME(IST) OF OBSERVATION	BASED ON 27-05-2024 (0430 HRS IST)
LOCATION LATITUDE/LONGITUDE	<p>The Severe Cyclonic Storm “Remal” (pronounced as “Re-Mal”) over the North Bay of Bengal moved nearly northwards, with a speed of 11 kmph during past 06 hours, and lay centered at 0430 hrs IST of today, the 27th May, 2024 over Coastal Bangladesh and adjoining Coastal West Bengal, near latitude 22.2°N and longitude 89.3°E about 130 km east-northeast of Sagar Islands (West Bengal), 100 km west of Khepupara (Bangladesh), 65 km east of Canning (West Bengal) and 50km southwest of Mongla (Bangladesh).</p> <p>The system is likely to move north-northeastwards and gradually weaken into a Cyclonic Storm during next 3 hours. Thereafter, it would move northeastward and gradually weaken further.</p>
CURRENT INTENSITY NEAR CENTRE	85-95 Kmph Gusting To 105 Kmph.
OBSERVATIONS (0430 HOURS IST)	<p>RAINFALL (since 0830 hrs IST in cm):- Kolkata – 12, Alipore (South 24 Parganas) – 8, Tamruk (East Medinipur), Nimpith (South 24 Parganas), Uluberia (Howrah)- 7 each.</p> <p>Reported Wind Speed (Kmph): India, Dum Dum- 91, Canning & Ramakrishna Mission- 78 each, Alipore- 74, Baruipur-67, Kalyani-65, Nimpith- 63, Diamond Harbour-69, Sagar Island and Raidighi-63. Bangladesh: Patuathali-102, Khepupare-89, Sitkhaira-75, Mongla-75.</p>
FORECAST MOVEMENT, INTENSITY AND LANDFALL	<p>The system is likely to move north-northeastwards and gradually weaken into a Cyclonic Storm during next 3 hours. Thereafter, it would move northeastward and gradually weaken further.</p>
FORECAST WIND	<p>Gale wind speed reaching 85-95 kmph gusting to 105 kmph is prevailing along & off Bangladesh and West Bengal & North Bay of Bengal and likely to decrease gradually becoming 80-90 Kmph gusting to 100 Kmph by today morning and Squally wind speed reaching 50-60 Kmph gusting to 70 Kmph by today noon.</p>



FORECAST TRACK ALONGWITH CONE OF UNCERTAINTY IN ASSOCIATION WITH SEVERE CYCLONIC STORM 'REMAL' OVER NORTH BAY OF BENGAL BASED ON 2100 UTC (0230 IST) OF 26TH MAY 2024.



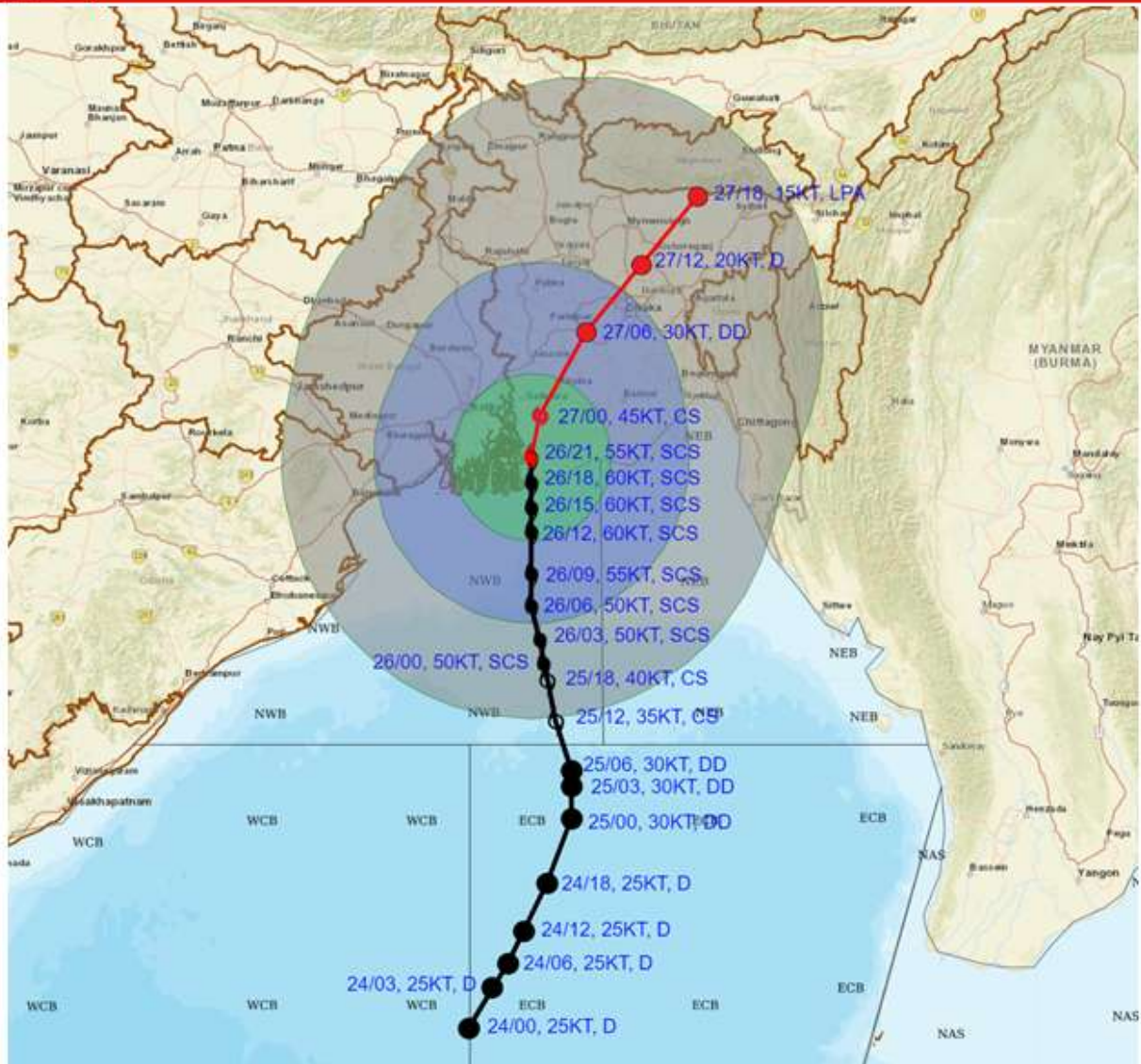
DATE/TIME IN UTC
 IST=UTC + 0530
 L: LOW PRESSURE AREA
 WML: WELL MARKED LOW PRESSURE AREA
 D: DEPRESSION (17-27 KT)
 DD: DEEP DEPRESSION (28-33 KT)
 CS: CYCLONIC STORM (34-47 KT)
 SCS: SEVERE CYCLONIC STORM (48-63KT)
 VSCS: VERY SEVERE CYCLONIC STORM (64-89 KT)
 ESCS: EXTREMELY SEVERE CYCLONIC STORM (90-119 KT)
 SuCS: SUPER CYCLONIC STORM (≥ 120 KT)

● LESS THAN 34 KT
 ⦿ 34-47 KT
 ⦿ ≥ 48 KT
 — OBSERVED TRACK
 — FORECAST TRACK
 ▲ CONE OF UNCERTAINTY

Forecast Date and Time (UTC)	DISTANCE (KM) AND DIRECTION FROM STATIONS			
	Canning	Sagar Island	Khepupara	Mongla
26.05.24/2100	60, ESE	120, ENE	100, W	75, SSW
27.05.24/0000	70, ENE	110, WNW	110, WNW	25, WSW



FORECAST TRACK ALONGWITH QUADRANT WIND DISTRIBUTION IN ASSOCIATION WITH SEVERE CYCLONIC STORM 'REMAL' OVER NORTH BAY OF BENGAL BASED ON 2100 UTC (0230 IST) OF 26TH MAY 2024.

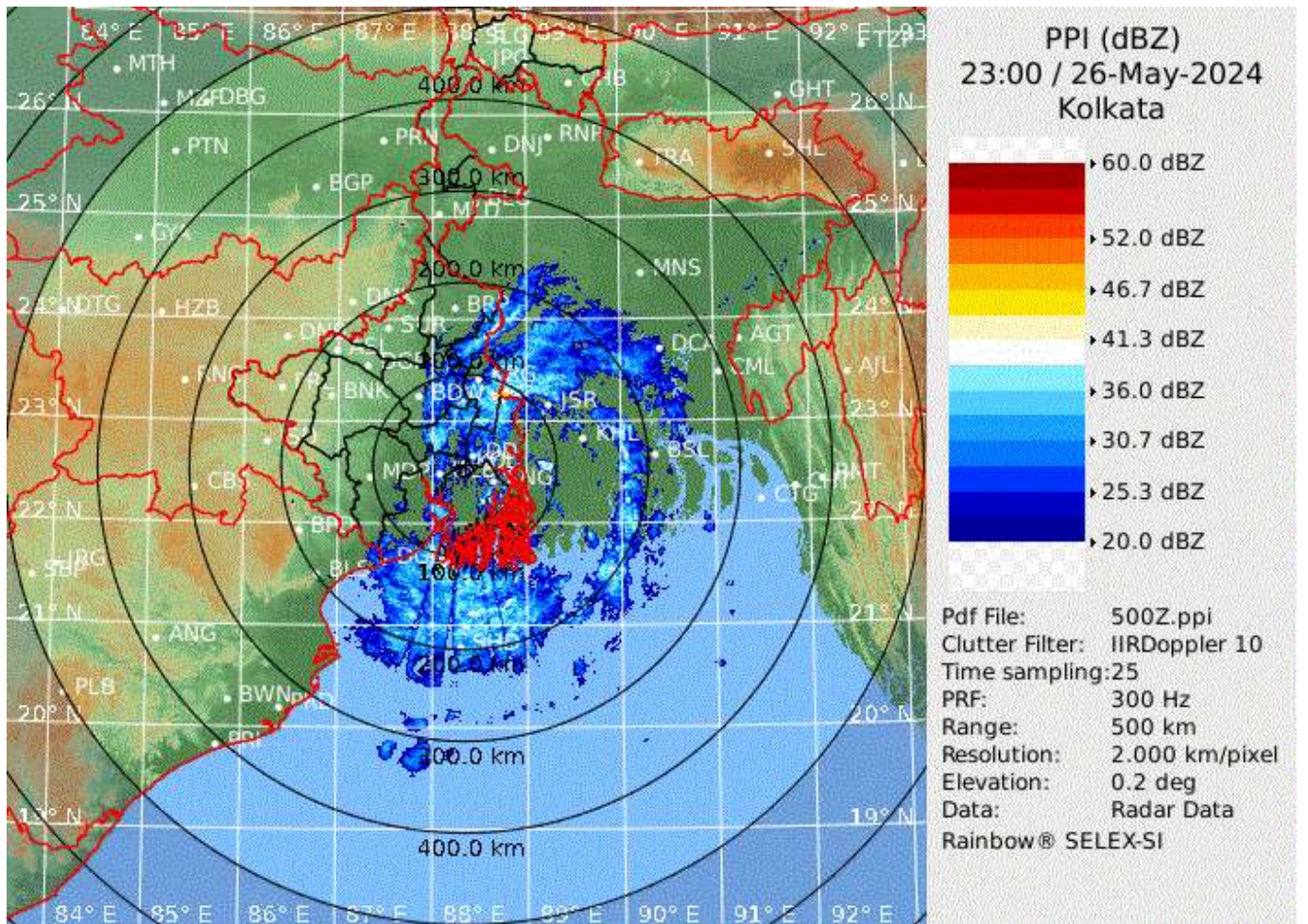


DATE/TIME IN UTC
 IST=UTC + 0530
 L: LOW PRESSURE AREA
 WML: WELL MARKED LOW PRESSURE AREA
 D: DEPRESSION (17-27 KT)
 DD: DEEP DEPRESSION (28-33 KT)
 CS: CYCLONIC STORM (34-47 KT)
 SCS: SEVERE CYCLONIC STORM (48-63KT)
 VSCS: VERY SEVERE CYCLONIC STORM (64-89 KT)
 ESCS: EXTREMELY SEVERE CYCLONIC STORM (90-119 KT)
 SuCS: SUPER CYCLONIC STORM (≥ 120 KT)

● LESS THAN 34 KT
 ○ 34-47 KT
 ● ≥ 48 KT
 — OBSERVED TRACK
 — FORECAST TRACK
 — CONE OF UNCERTAINTY
 AREA OF MAXIMUM SUSTAINED WIND SPEED:
 28-33 KT (52-61 KMPH)
 34-49 KT (62-91 KMPH)
 50-63 KT (92-117 KMPH)
 ≥ 64 KT (≥118 KMPH)

IMPACT OVER THE SEA

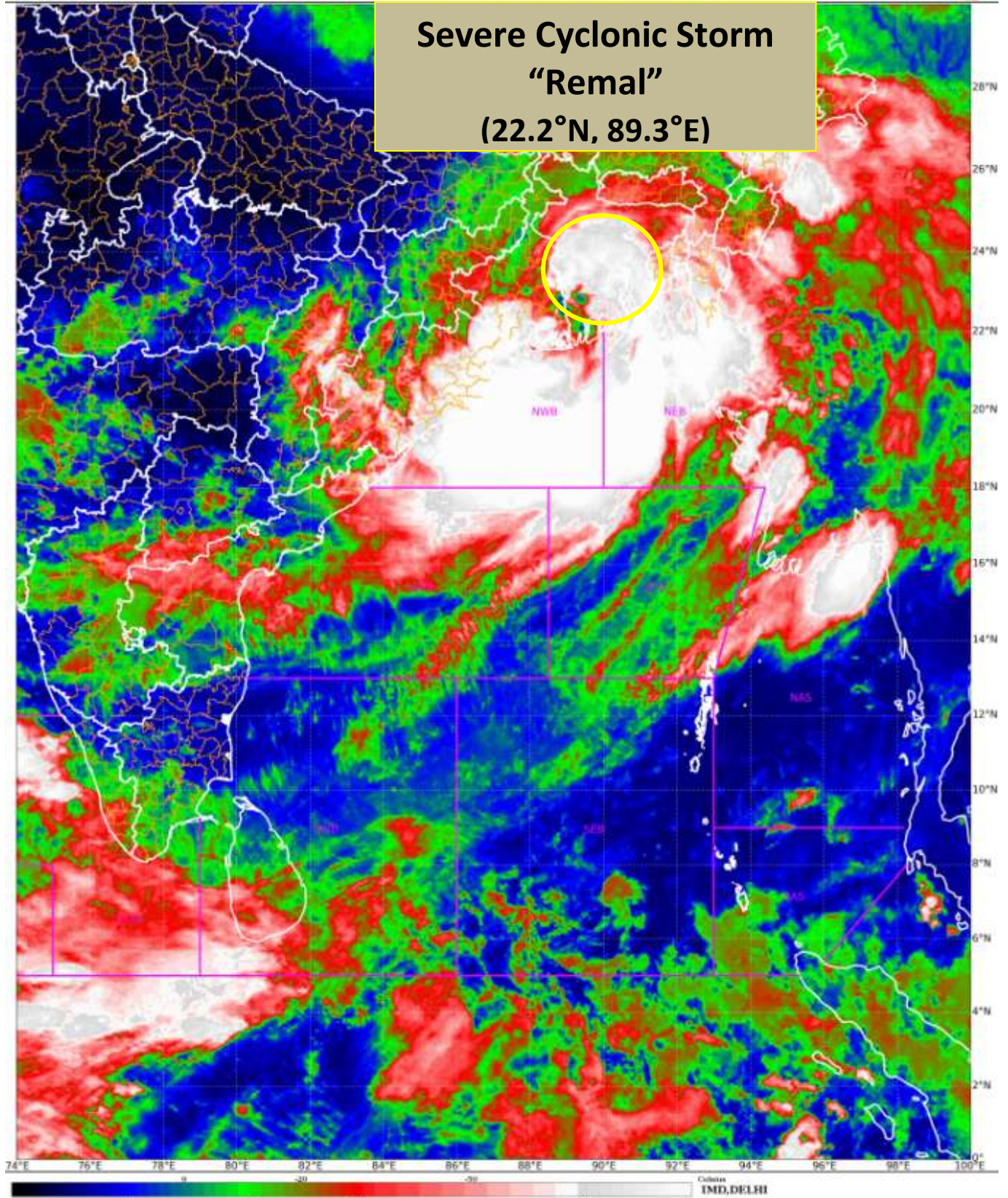
MSW (knot/kmph)	Impact	Action
28-33 (52-61)	Very rough seas	Total suspension of fishing operations
34-49 (62-91)	High to very high seas	Total suspension of fishing operations
50-63 (92-117)	Very high seas	Total suspension of fishing operations
≥ 64 (≥118)	Phenomenal	Total suspension of fishing operations



KOLKATA RADAR IMAGERY AT 0430 HOURS IST of 27th MAY 2024



Severe Cyclonic Storm "Remal" (22.2°N, 89.3°E)



INSAT 3D based NHC Curve image based on 2200UTC of 26th May 2024